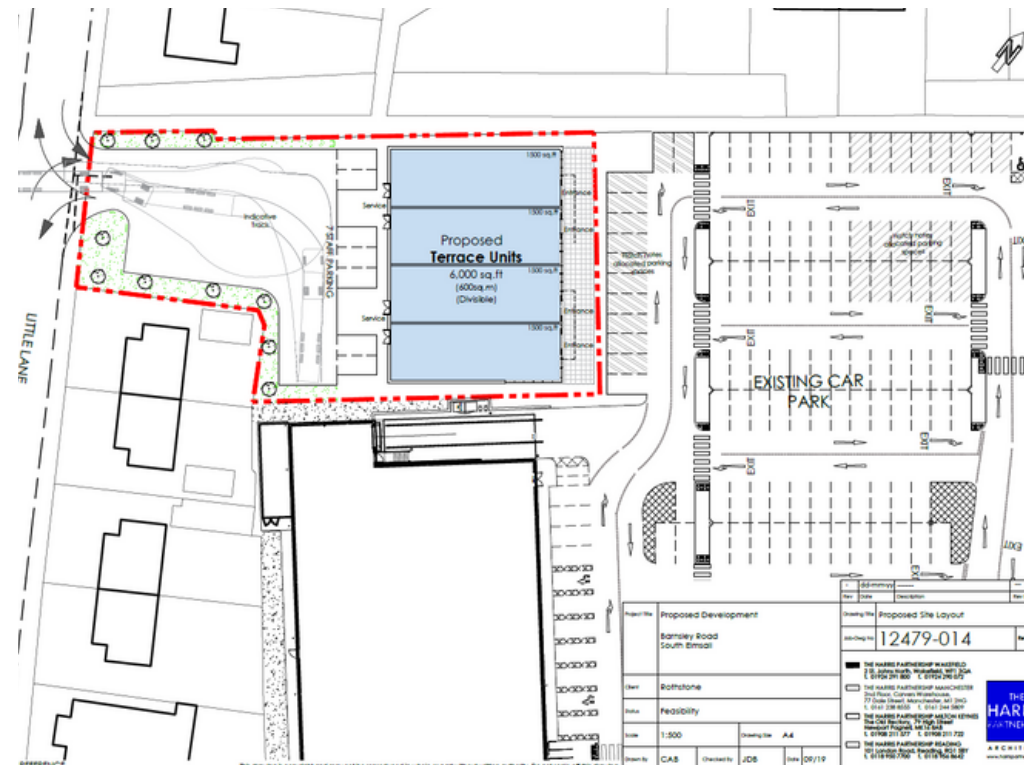
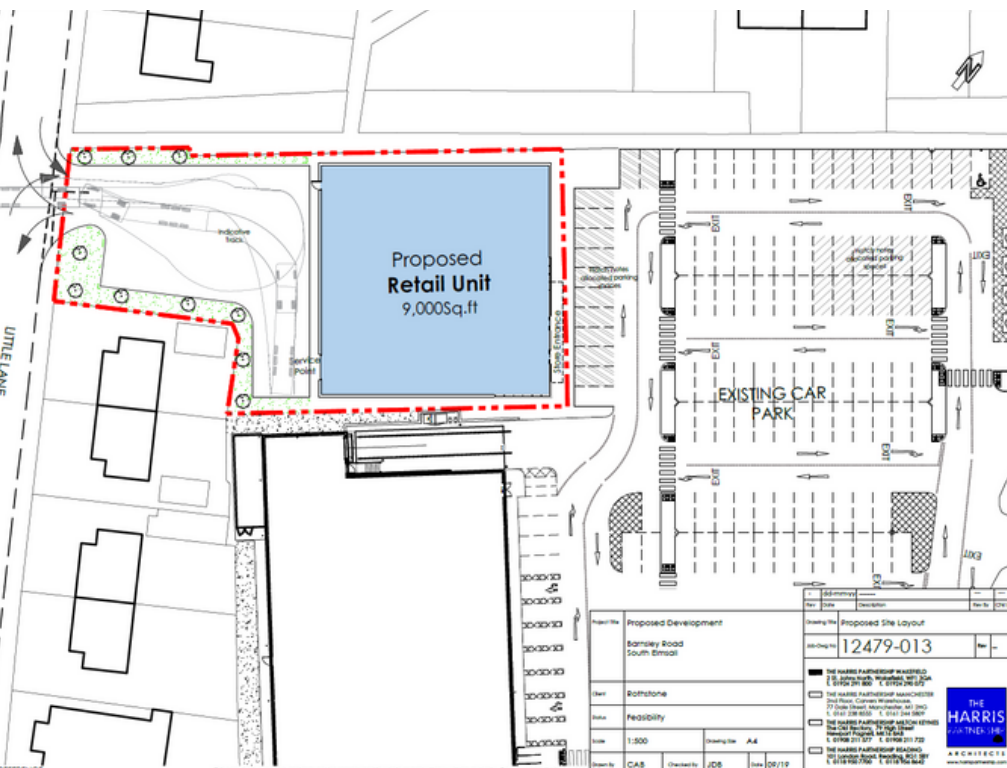


PROPOSED NEW RETAIL/LEISURE UNITS TO LET SUBJECT TO PLANNING

UNITS FROM 1,500 SQFT - 9,000 SQFT
ADJACENT TO A NEW ALDI. HOME BARGAINS AND ASDA
WITHIN CLOSE PROXIMITY

**BARNSELY ROAD, SOUTH ELMSALL, PONTEFRACT,
WF9 2AA**



SITUATION & DESCRIPTION

The site is located adjacent to a recently opened Aldi on the edge of South Elmsall town centre.

The area is an established retail location with nearby occupiers including Home Bargains and Asda. Immediately opposite is a Health Centre and the development provides the main car park for the town.

The proposed development offers the opportunity of providing a single unit of 9,000 sqft or alternatively a terrace of smaller units from 1,500 sqft upwards.



VIEWINGS & FURTHER INFORMATION

For further information please contact the sole letting agents, Cheetham & Mortimer.

Contact: Barrie Cochrane
Telephone: 0161 828 8797
Email: bcochrane@cheetham-mortimer.com

CODE FOR LEASING BUSINESS PREMISES

Please be aware of the RICS Code for Leasing Business Premises which can be found on www.rics.org/globalassets/code-for-leasing_ps-version_feb-2020.pdf
We recommend you obtain professional advice if you are not represented.