

A new urban district for Stoke-on-Trent

Retail & leisure opportunities
at the heart of Stoke-on-Trent

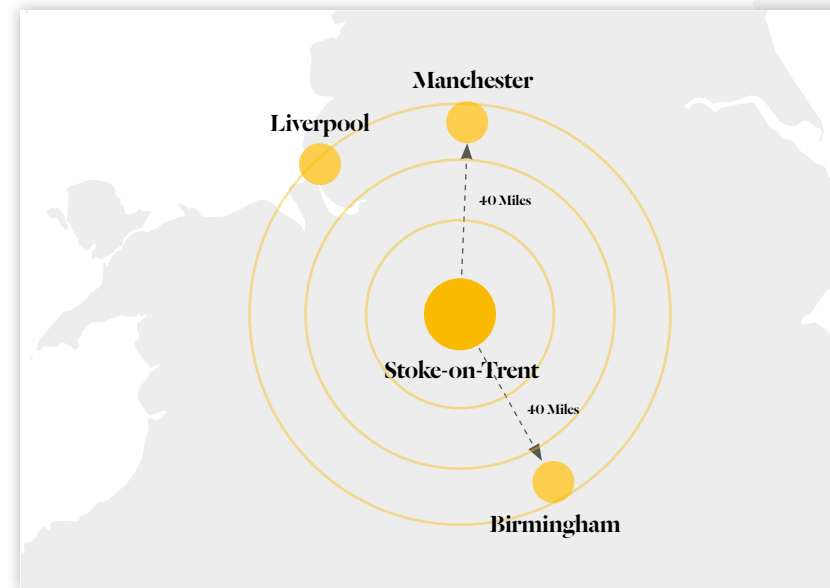


SMITHFIELD
STOKE ON TRENT



Perfectly placed

Right at the heart of the City Centre, Smithfield is building a community that is perfectly placed for future growth.



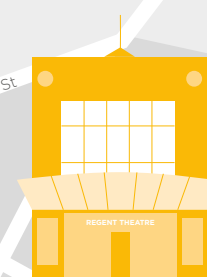
MITCHELL
ARTS CENTRE



CENTRAL
BUSINESS
DISTRICT

SMITHFIELD
STOKE ON TRENT

REGENT
THEATRE



CULTURAL
QUARTER



POTTERIES
MUSEUM



VICTORIA
HALL



TRANSPORT
INTERCHANGE

INTU
POTTERIES

RETAIL
QUARTER

Stoke Train
Station

University
Quarter
(33,000 students)



Smithfield is a new urban quarter for Stoke-on-Trent which, when completed, will comprise 1.2 million sq.ft of office, retail and hotel space.

It is currently home to over 1,700 workers with 151 apartments and a 140 bed Hilton Hotel opening early 2020, with outline permission secured for a further 200,000 sq.ft office accommodation.

Smithfield is adjacent to the Cultural Quarter, which is home to the Potteries Museum where a new dedicated £6m Spitfire display is being created, the Regent Theatre and the Mitchell Arts Centre.

Schedule of areas

Unit	M²	Sq Ft	Availability
1	458	4,929	AVAILABLE NOW
2	355	3,821	AVAILABLE NOW
3	111	1,199	AVAILABLE EARLY 2020
4	637	6,854	AVAILABLE EARLY 2020
5	120	1,291	AVAILABLE EARLY 2020





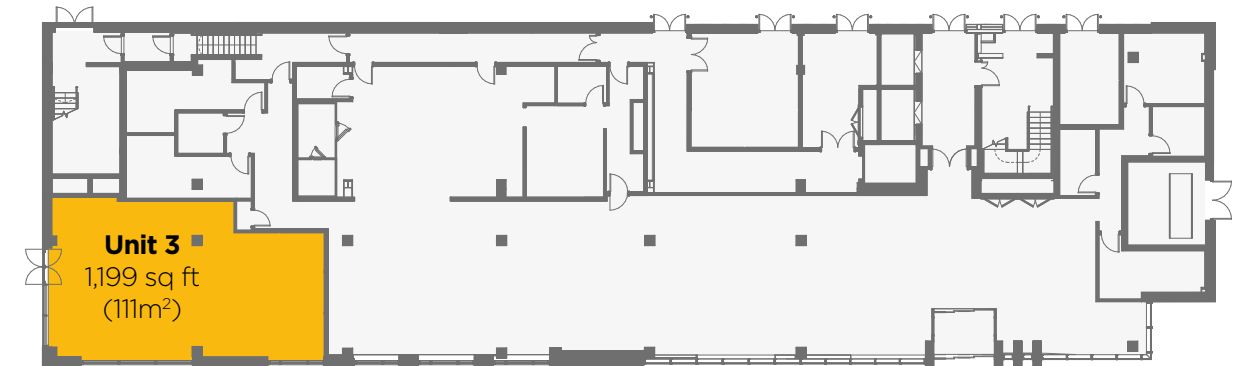
2 Smithfield

Available Now



Hilton Garden Inn

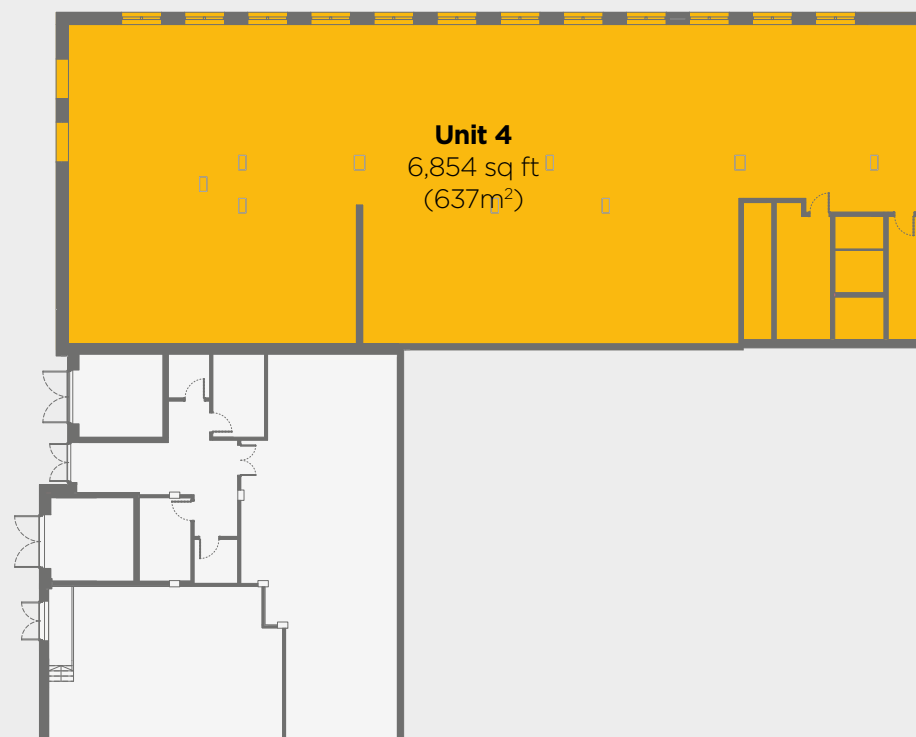
Available early 2020



Clayworks

Available early 2020

Lower Ground Floor



Ground Floor





Get in touch

- High quality, shell specification accommodation available
- Available for immediate occupation by way of a new, effectively full repairing and insuring lease for a term to be agreed
- Units are capable of subdivision
- Rent upon application
- Opportunity for outdoor seating
- Short and long term opportunities
- Pop-up/temporary opportunities

All enquiries:

WARWICK SMITHER

T: 0161 832 3375

E: WSMITHER@CHEETHAM-MORTIMER.COM

MISREPRESENTATION ACT: Cheetham & Mortimer act for themselves and for the vendors or lessors of this property, whose agents they are, give notice that: a) all particulars are set out as a general outline only for the guidance of intending purchasers or lessees and do not comprise any part of an offer or contract: b) all descriptions, dimensions, references to condition and necessary permissions for use and occupation and other details are given in good faith and are believed to be correct but any intending purchasers or tenants should not rely on them as statements or representations of fact but must satisfy themselves by inspection or otherwise as to the correctness of each of them. c) no person in the employment of Cheetham & Mortimer has any authority to make any representation of warranty whatsoever in relation to this property. Design by DSE.MOTION October 2019 (917).

